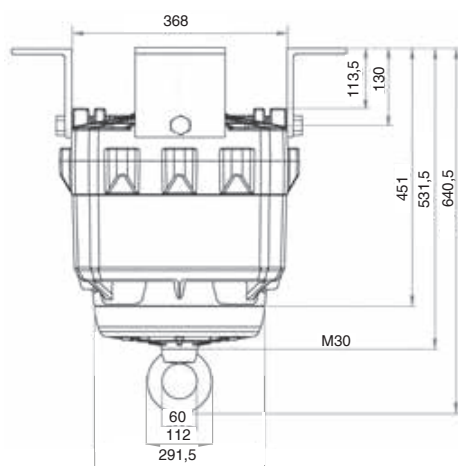
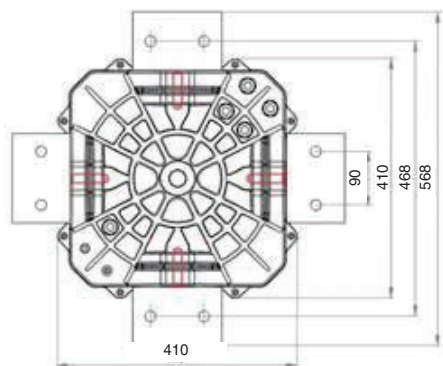


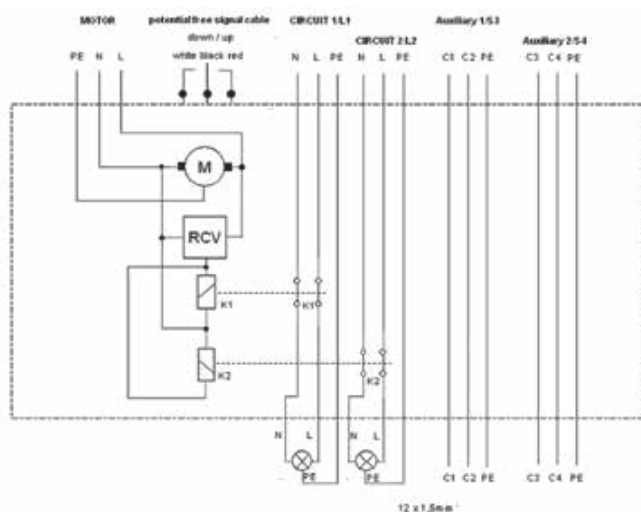
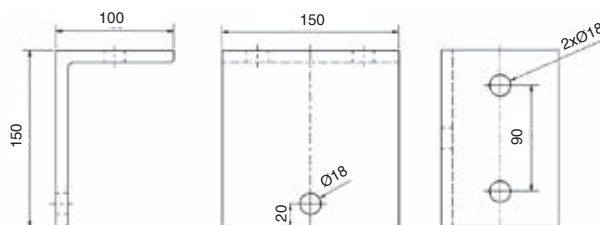
Technical Information

The Super Heavy Duty series have 2 separate circuits and 4 auxiliary contacts. The motor and lighting circuits have their own supply cables to allow individual circuit protection or integration into existing safety circuits.



Mounting kit MB-D

For Super Heavy Duty type, consists of 4 x 150 x 100 x 150 x 10 mm; angle brackets 4 M16 bolts



WR PFI dummy weight holder

WR PFI holds 5 x 20 kg dumbbell weights. 170mm ø x 340mm height. White, RAL 9010. Weights not supplied.

